

FD-9
Firmware Update Software
Instruction Manual



KONICA MINOLTA

Note: This manual abbreviates product names as follows

Name used in this manual	Official name
Windows 7	Microsoft® Windows® 7 Professional Operating System
Windows 8.1	Microsoft® Windows® 8.1 Pro Operating System
Windows 10	Microsoft® Windows® 10 Pro Operating System

Trademark Notices

- Microsoft and Windows are registered trademarks of the Microsoft Corporation in the US and in other countries.
- Other company names and product names that appear within this manual are trademarks or registered trademarks of their respective companies.

Notes on this Manual

- Copy or reproduction of all or any part of the contents of this manual without Konica Minolta's permission is strictly prohibited.
- The contents of this manual are subjects to change without prior notice
- Konica Minolta will not accept any responsibility for consequences arising from the use of the software.

Table of Contents

Introduction	1
System Requirements	1
Updating the firmware	2
Update procedure	2
If the update process fails	4
Installation of the device driver	5
When using Windows 7/8.1	5
When using Windows 10	8

Introduction

The FD-9 firmware update software is a tool for updating the firmware of the Konica Minolta Auto Scan Spectrophotometer FD-9 (hereafter referred to as "instrument").

Please read this manual thoroughly and follow the stated procedure.

System Requirements

The FD-9 firmware update software requires the following environment.

- OS
Windows 7 (x86) / Windows 8.1 (x86) / Windows 10 (x86)
Windows 7 (x64) / Windows 8.1 (x64) / Windows 10 (x64)
- The computer must be equipped with a USB2.0-compliant USB port

Instruments for which firmware can be updated

Konica Minolta Auto Scan Spectrophotometer FD-9

Updating the firmware

Perform the firmware update according to the procedure below.

Before performing the firmware update

IMPORTANT

Firmware update can be performed only on one instrument at a time via USB.

Before starting the firmware update procedure, unplug any and all USB devices other than the keyboard and mouse. In addition, all other applications should be shut down.

Once the firmware update has started, do not perform any other operations on the PC or plug in any other USB device, etc. until the update process has been completed.

Update procedure

1. Connect the instrument for which the firmware will be updated to the PC via USB.

[Note]

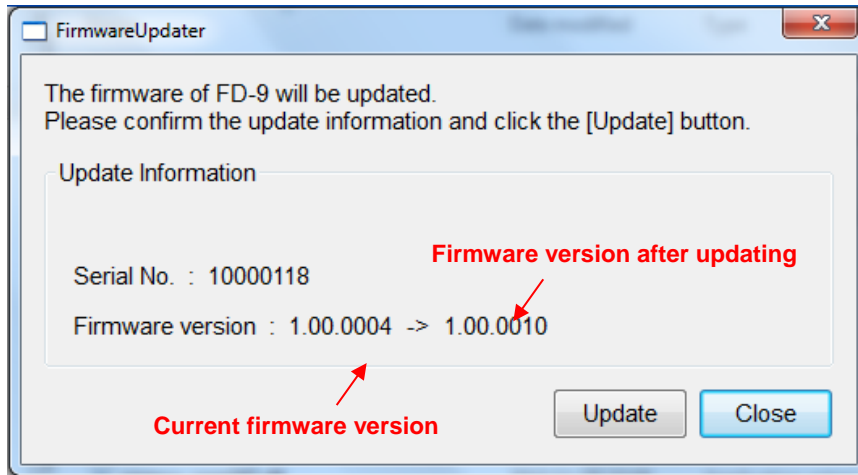
The device driver installation will be needed when the instrument is connected to PC for the first time. Refer to "[Installation of the device driver](#)" for details regarding installation of the device driver.

2. Start the firmware update software.

If the following dialog appears when the firmware update software is started, click the [Allow access] button and proceed to the next step.



3. When connection to the FD-9 has succeeded, the following dialog will appear.
The firmware version is displayed. If the firmware version to be updated is correct, perform the next step. (Version numbers below are only examples; actual version numbers may be different.)

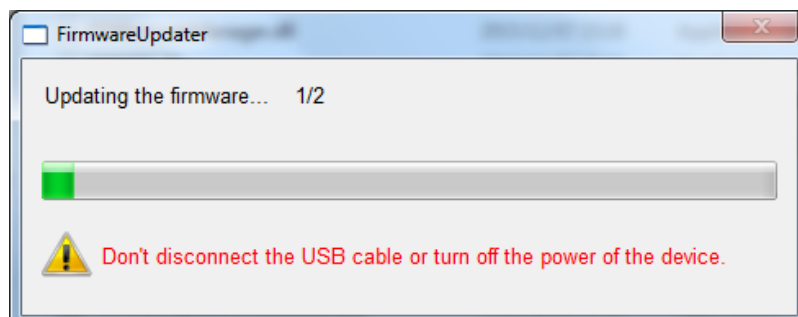


4. Click the [Update] button to perform the firmware update.

[Attention]

Once the firmware update has started, do not disconnect the instrument's USB cable or turn the power off.

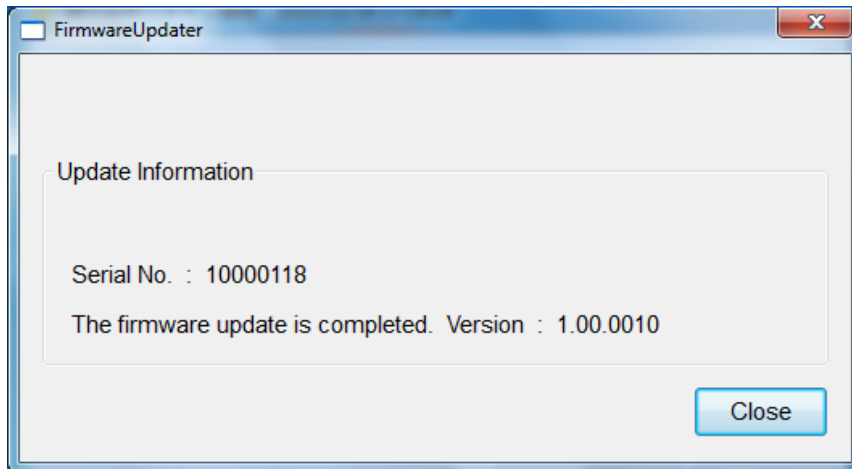
5. The firmware update will start. In total, the updater contains updates for four types of firmware. Only the necessary updates will be executed. For each type of firmware updated, the dialog below will be displayed until the firmware update is completed. Wait until the all update processes have been completed.



[Note]

Updates of all firmware are normally completed in about several minutes, but depending on the computer environment, it may take 10 minutes or longer.

6. When all firmware updates have been completed, the dialog below will appear. Click the [Close] button to exit the update software.



7. Verify on the instrument that the firmware has been updated to the new version. The firmware version of the instrument can be checked in the Settings screen. See Settings Screen in the FD-9 Instruction Manual.

If the update process fails

If the firmware update process fails, the firmware update software will exit after showing an error message instead of the dialog in step 5.

In addition, if the Version shown in the Settings screen is not a proper version number (for example, if "0.00.0000" or "9.99.9999" is shown), then it is possible that the firmware update has failed.

If this occurs, switch the instrument's power off for a few seconds and then switch it back on, start the firmware update software again and try to perform the firmware update process again according to "[Update procedure](#)".

Installation of the device driver

When using Windows 7/8.1

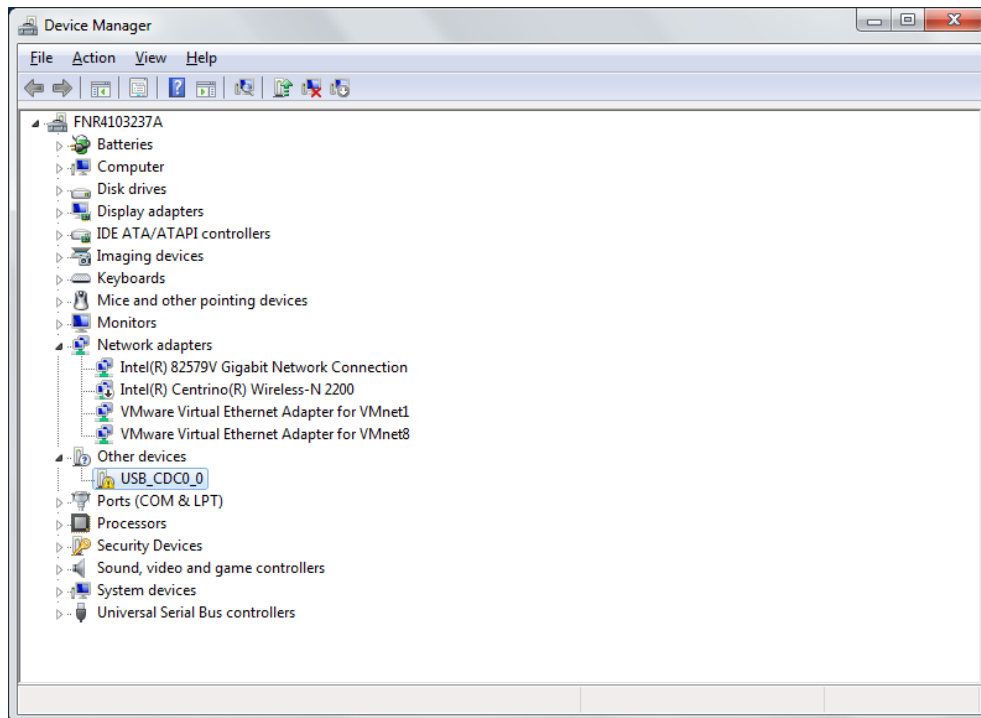
1. Connect the instrument to a USB port of the PC and switch on the instrument.

2. Open Device Manager.

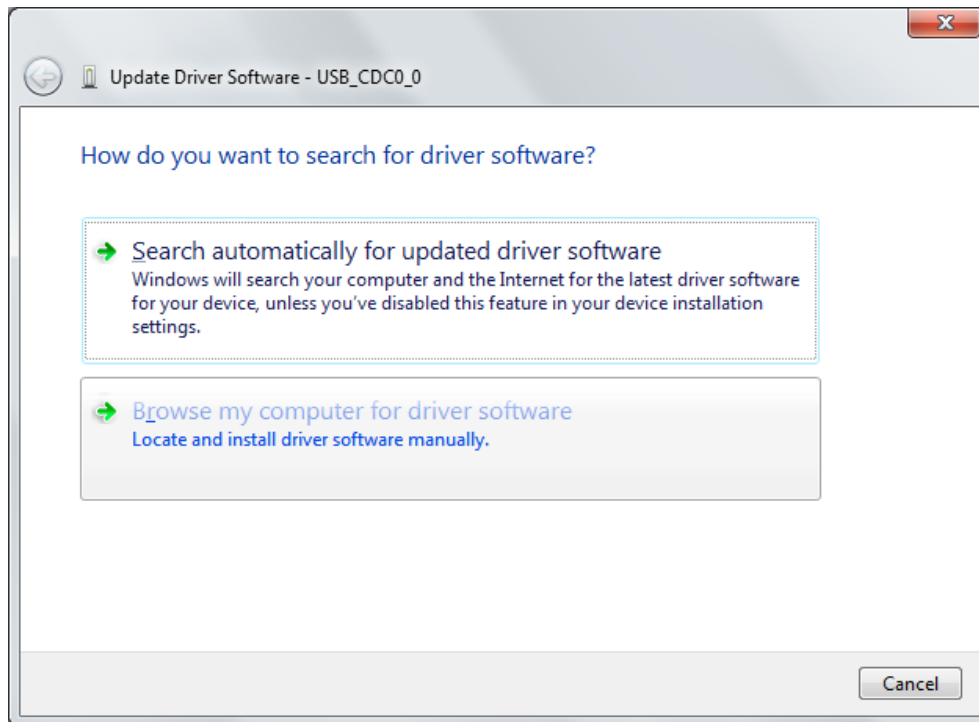
Windows 7: click on the Start menu, select "Control Panel", and select "System" in the Control Panel window. In the System window, select "Device Manager" from the menu on the left side of the window.

Windows 8.1: right-click on the Windows mark in the lower left of the screen and select "Device Manager" from the menu that appears.

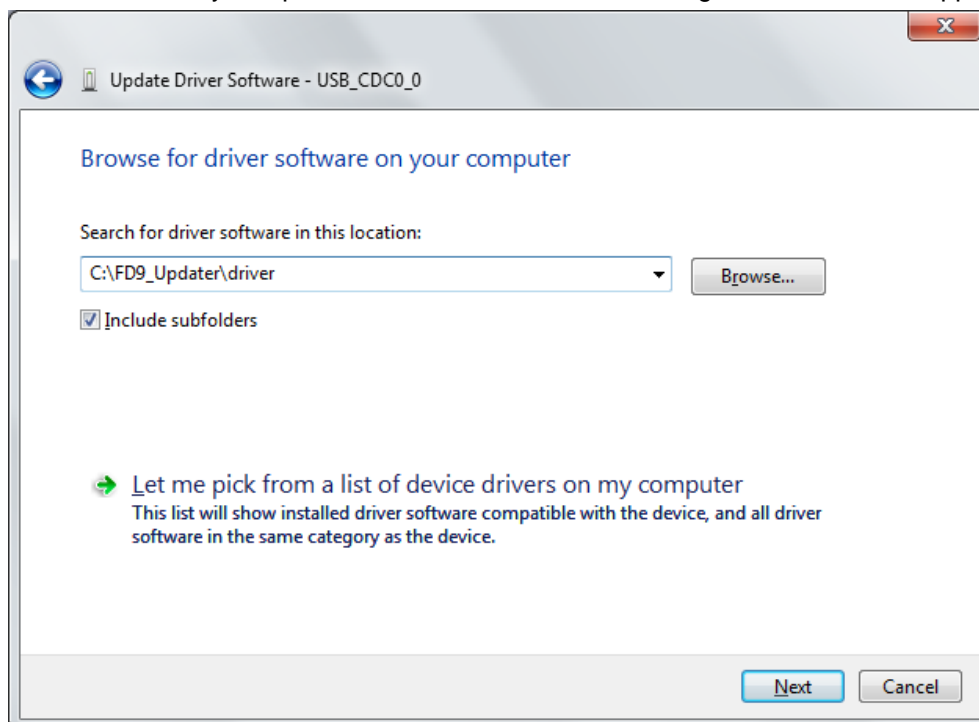
3. In Device Manager, click on "Other Devices" to open the Other Devices list as shown below.



4. Right-click on the "USB_CDC" that is marked with a "!" and select "Update Driver Software ..." from the menu that appears. The dialog shown on the next page will appear.

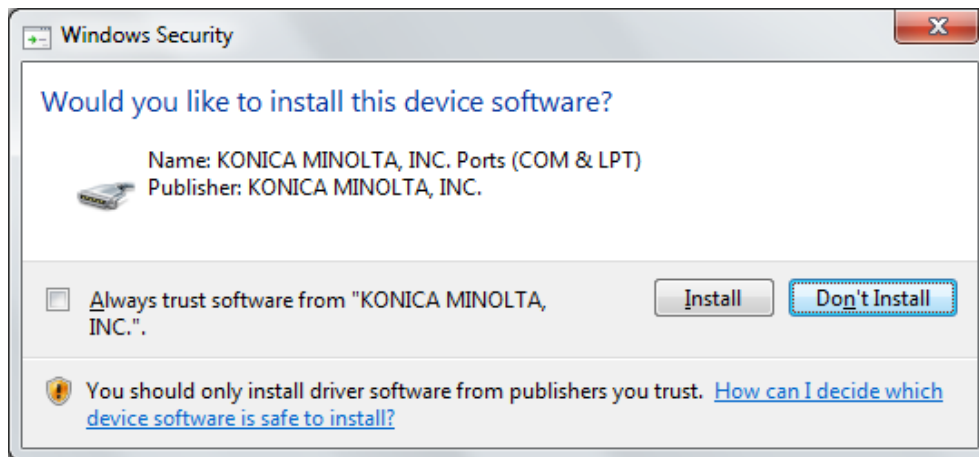


5. Click on "Browse my computer for driver software". The dialog shown below will appear.



6. Click on the [Browse] button and select the "driver" subfolder in the folder where the FD-9 firmware update software is located, and then click the [Next] button.

7. If the following Windows Security dialog is shown, click the [Install] button.

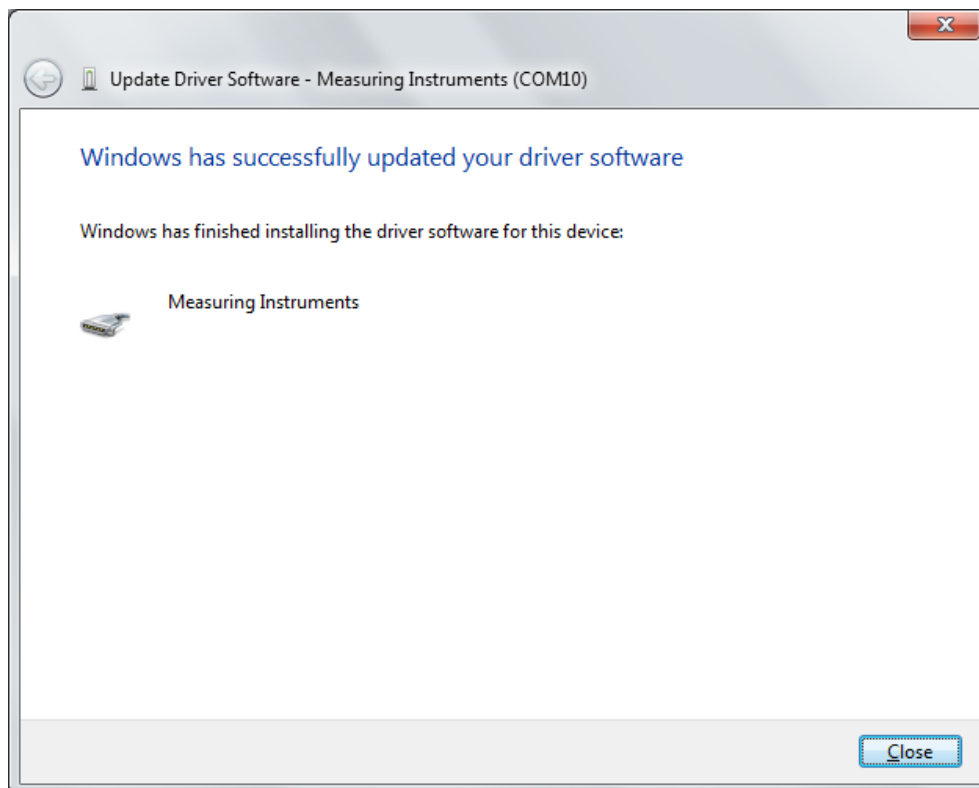


8. Installation will start.

[Attention]

Installation may require several minutes. Do not switch off the instrument power or disconnect the USB cable until installation has been completed.

9. When installation has been completed, the dialog shown below will appear. Click the [Close] button to close the dialog.



When using Windows 10

1. Connect the instrument to a USB port of the PC and switch on the instrument. The driver software will be installed automatically.